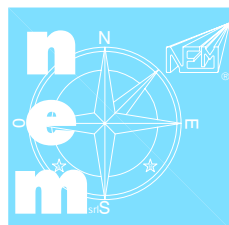
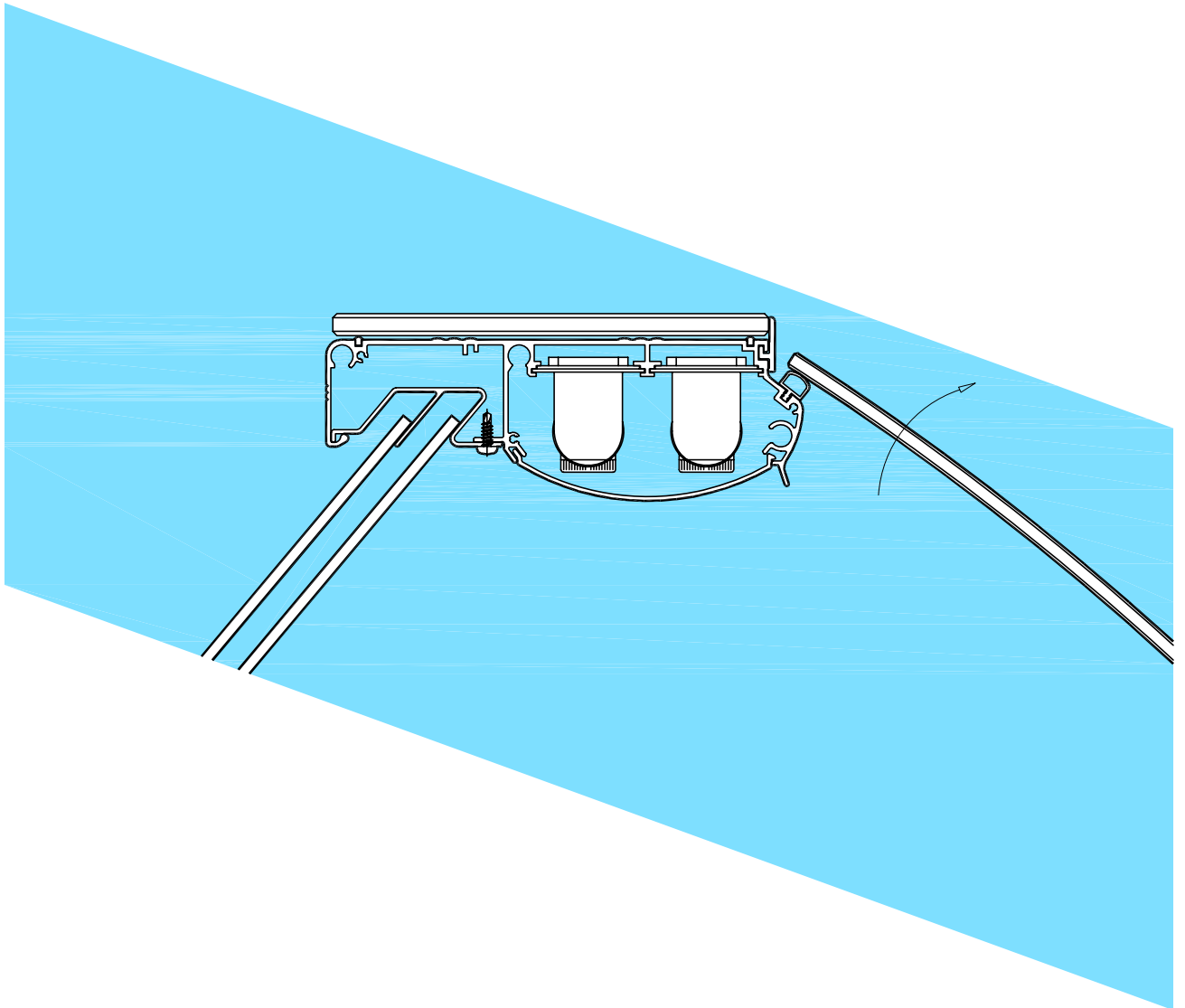
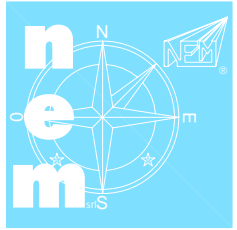
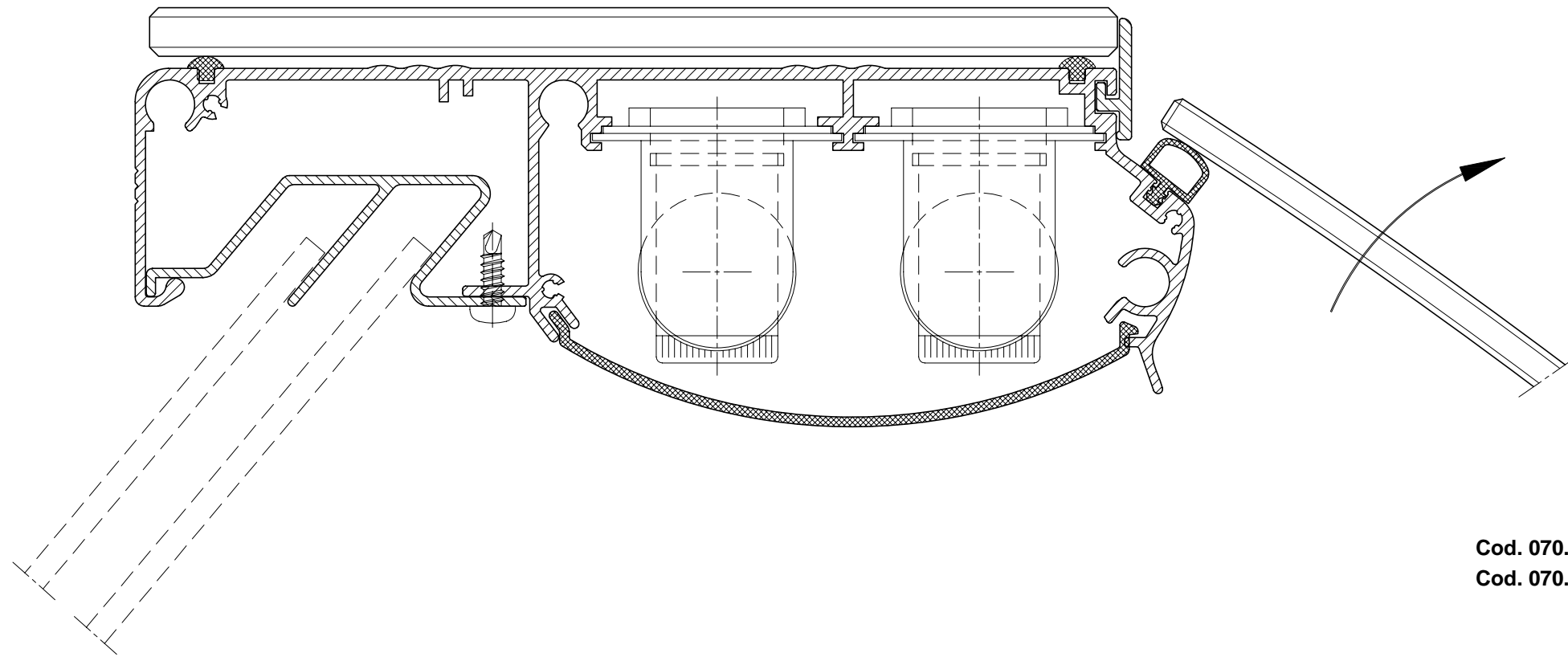


Apertura verso il basso per vetri lineari Sistema **116**
*Tilt opening for linear glasses System **116***



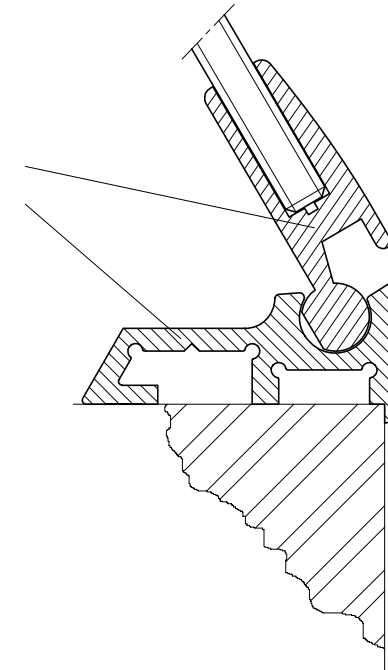


Sistema **116**
System **116**

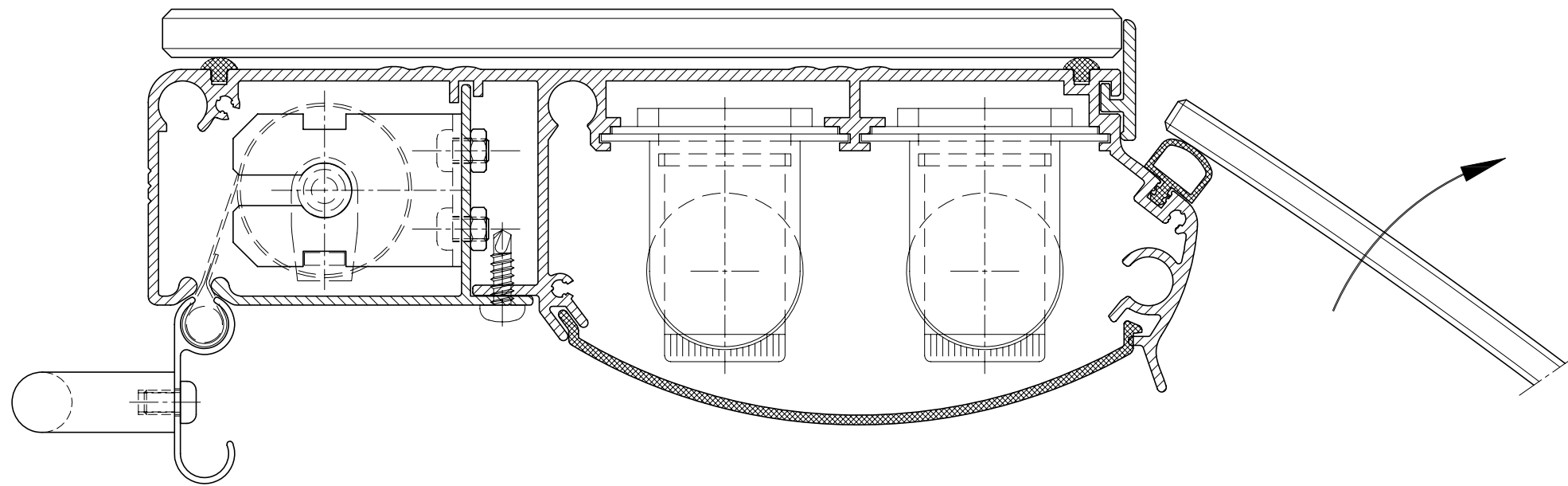


Cod. 070.1501
Cod. 070.1511

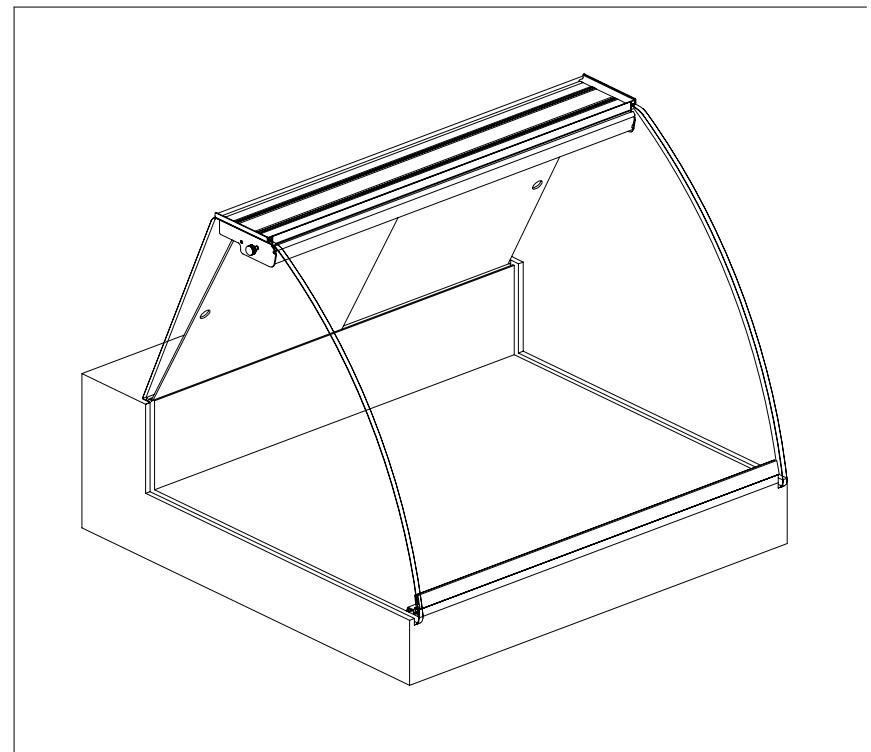
Sistema **116** per pannelli scorrevoli
System **116** for sliding panes

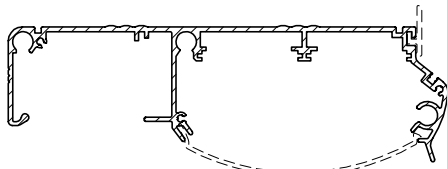


Vedi pag. 210/01 e 210/02
See sheet 210/01 and 210/02



Sistema **116** per tendina
System **116** for curtain





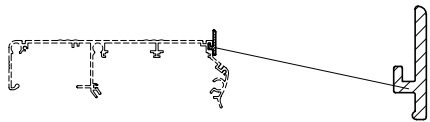
Profilo cappello
Top shelf profile

L=5200mm **Cod. 116.1000**



Protezione lampada
Light protection

L=5000mm **Cod. 050.1600.00**



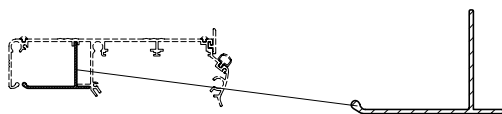
Profilo battuta vetro
Front profile

L=5200mm **Cod. 116.1030**



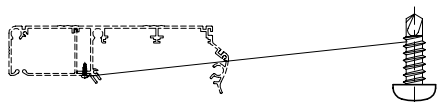
Profilo scorrevoli
Sliding profile

L=5200mm **Cod. 116.1010**



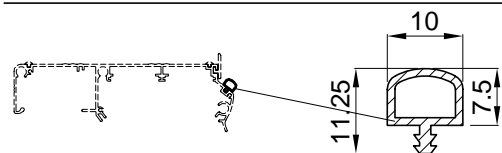
Profilo antipolvere/fissaggio tenda
Curtain fixing anti-dust profile

L=5200mm **Cod. 116.1020**



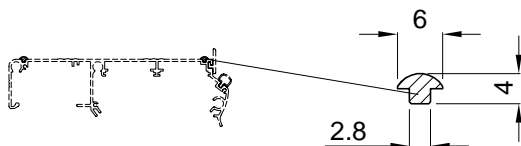
Vite autoperforante 4,2x13
Self-drilling screw 4,2x13

Cod. 002.0201.00



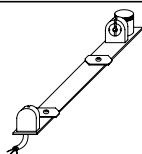
Guarnizione battuta vetro
Glass sight gasket

L=100m **Cod. 066.0299.00**



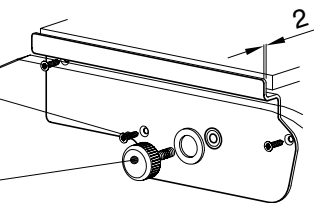
Guarnizione mensola vetro
Shelf glass PVC gasket

L=200m **Cod. 090.0299.00**



Cablaggio su lama mod. 050 - Neon da Ø26 (vedi pag. 225/01)
Wiring on plate mod. 050 - Neon Ø26 (see sheet 225/01)

Vite autofilettante Ø2,9x19
Self tapping screw Ø2,9x19
Cod. 002.1503.00



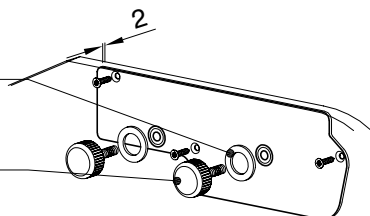
Tappo testata in alluminio compl.
Complete aluminium end cap

Cod. 116.1801
Cod. 116.1802

Pomello tappo lampada
Ball grip
Cod. 003.0345

* Rappresentato particolare Sx
Left part represented

Ranella in PVC
PVC washer
Cod. 005.0336.00

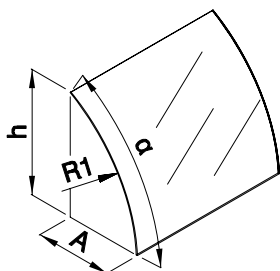


Tappo testata in alluminio compl.
Complete aluminium end cap

Cod. 116.1803
Cod. 116.1804

Pomello tappo lampada
Ball grip
Cod. 003.0345

* Rappresentato particolare Sx
Left part represented



Vetri (vedi pag. 240/01 e seguenti)
Glasses (see sheet 240/01 and next)

La NEM s.r.l. declina ogni responsabilità civile e penale in caso di rotture dei vetri dovute a loro difetti o errato montaggio.

NEM s.r.l. undertakes neither public nor criminal liability in case glasses crack due to their defects or to a wrong assembling.